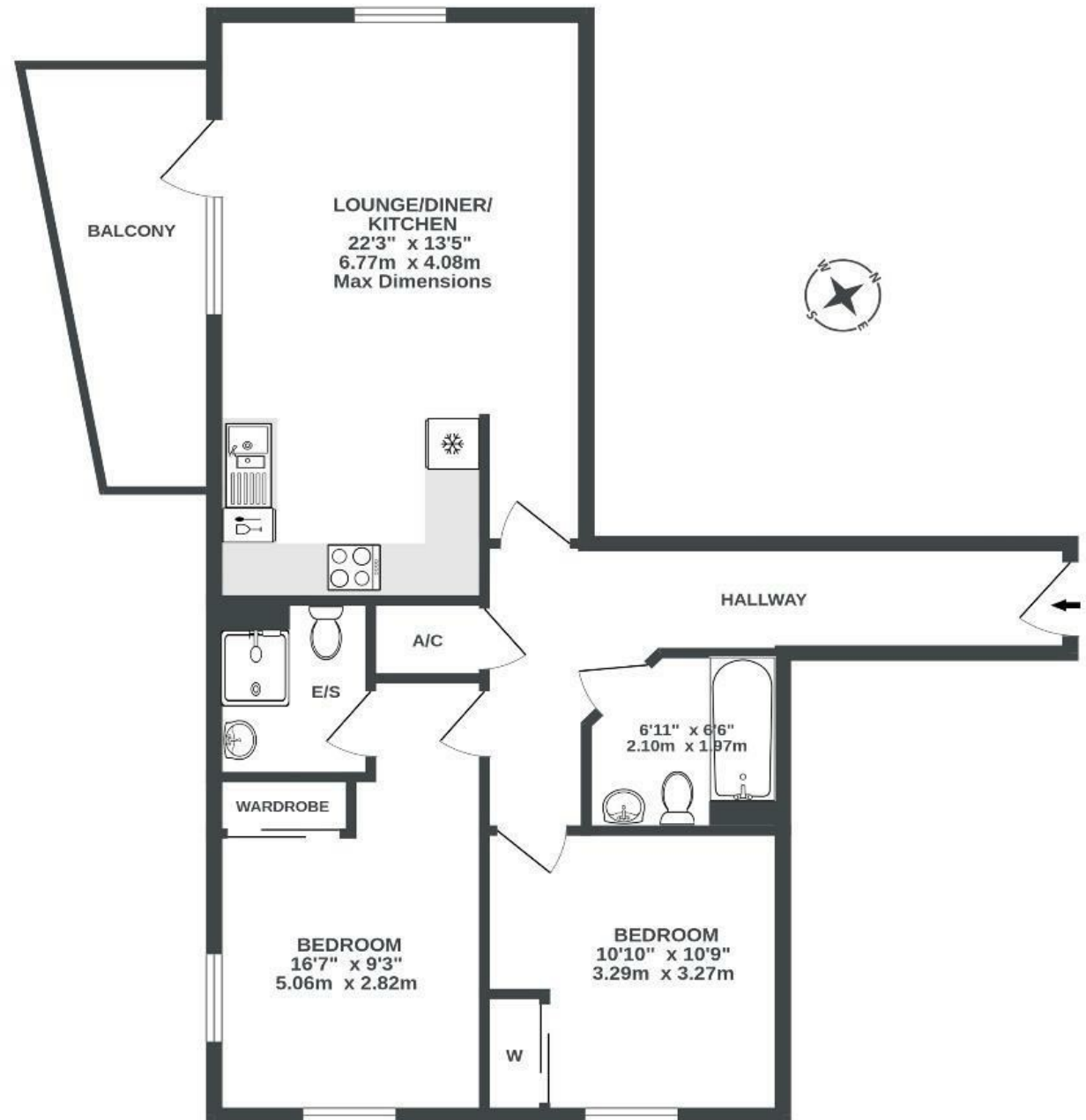


# BEDMINSTER

69.5 SQM / 748 SQFT



SECOND FLOOR  
748 sq.ft. (69.5 sq.m.) approx.



Illustrations are for reference purposes only, measurements are approximate, not to scale.

**Boardwalk**

# Paxton Drive

, BRISTOL

£

£265,000



Bristol, BS3

2BN

zzz

2 Bedrooms



2 Bathrooms

*"I bought this property due to its fantastic location. It's amazing that you can walk straight over Greville Smyth Park to North Street or up into Ashton Court in just a few minutes."*

